



DO YOU HAVE SOMETHING TO HIDE?®

# DekoRRa® Mock Rock® Premium Artificial Rocks and Enclosures

- Mock Rock® artificial rocks are cast directly from natural stone—color and texture are built in, not painted on
- Durable commercial grade construction—will not fade or crack in sunlight or cold temperatures
- Heavy-duty base channel construction and built in custom stake tabs accommodate durable ground stakes included with each rock
- Made in the USA of recyclable composite materials
- ASSE standard 1060 certification available on specific models



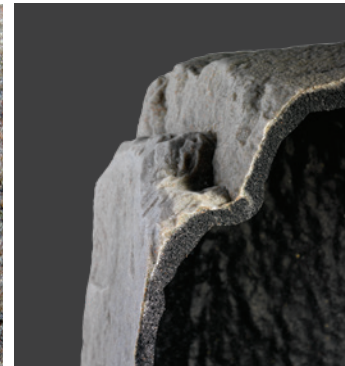
Sturdy flanges are built into each rock for anchoring securely to the ground.



Anchor stakes included with each rock enclosure. Conceal flanges and stakes with mulch after anchoring.



Texture and color mimic real stone and will not fade.



Add optional Pro-R™ Thermal Wall for added insulation and added strength. Riverbed color only.



## MODEL 101

Dimensions: 31"L x 26"W x 21"H  
Weight: 8 lbs

### Common Uses:

- Well/Septic up to 18" Tall
- Centrifugal Pumps
- Small Pump Systems
- Backflow Assemblies



## MODEL 102

Dimensions: 27"L x 21"W x 25"H  
Weight: 8 lbs

### Common Uses:

- Well/Septic up to 24" Tall
- Utility Pedestals
- Small Pump Systems
- Backflow Assemblies



## MODEL 103

Dimensions: 56"L x 42"W x 30"H  
Weight: 28 lbs

### Common Uses:

- Holding Tank Lids up to 30" Diameter and up to 20" Tall
- Backflow Assemblies
- Large Pump Systems
- Satellite Dishes
- Flat Face for Address Plaque



## MODEL 104

Dimensions: 60"L x 48"W x 41"H  
Weight: 39 lbs

### Common Uses:

- Pressure Tanks up to 38" tall
- Well Assemblies
- Electrical Transformers
- Pool Filters and Pumps



## MODEL 105

Dimensions: 24"L x 12"W x 12½"H  
Weight: 2½ lbs

### Common Uses:

- Flat Face for Address Plaque
- Curb Stops
- Electrical Outlets
- Septic/Sewer Cleanouts



## MODEL 106

Dimensions: 19"L x 14"W x 12"H  
Weight: 2½ lbs

### Common Uses:

- Vent Pipes up to 10" Tall
- Septic Cleanouts
- Curb Stops
- Electrical Outlets



## MODEL 107

Dimensions: 15"L x 14"W x 23"H  
Weight: 6 lbs

### Common Uses:

- Well Pipes up to 18" Tall
- Septic Vents up to 20" Tall
- Pressure Vacuum Breakers
- Outdoor Electrical Outlets



## MODEL 108

Dimensions: 31"L x 27"W x 6"H  
Weight: 6 lbs

### Common Uses:

- Septic Risers and Manhole Lids up to 24" in Diameter and up to 4" High
- Water Garden Skimmers
- Valve Box Lids



## MODEL 109

Dimensions: 30"L x 23"W x 18"H  
Weight: 6 lbs

### Common Uses:

- Small Pumps
- Valve Box Lids
- Pond Filters
- Aeration Devices
- Well/Septic Pipes up to 12" Tall



## MODEL 110

Dimensions: 39"L x 21"W x 21"H  
Weight: 10 lbs

### Common Uses:

- Backflow Assemblies up to 2" in Diameter, 30" Long and up to 19" High
- External Water Pumps
- Flat Face for Address Plaque



## MODEL 111

Dimensions: 34"L x 32"W x 15"H  
Weight: 12 lbs

### Common Uses:

- Septic Risers and Manhole Lids up to 30" in Diameter, plus Junction Box, up to 12" High



## MODEL 112

Dimensions: 36"L x 36"W x 9"H  
Weight: 12 lbs

### Common Uses:

- Septic Risers and Manhole Lids up to 30" in Diameter, plus Junction Box, up to 7" High



## MODEL 113

Dimensions: 18"L x 17"W x 34"H  
Weight: 8 lbs

### Common Uses:

- Telephone and Cable Pedestals up to 13" Wide and up to 33" High
- Tall Septic Vents
- Irrigation Controls
- Flat Face for Address Plaque



## MODEL 114

Dimensions: 63"L x 48"W x 61"H  
Weight: 70 lbs

### Common Uses:

- Pressure Tanks up to 60" Tall
- Well Assemblies
- Electrical Transformers
- Pool Filter and Pump Equipment



## MODEL 115

Dimensions: 24"L x 20"W x 24"H  
Weight: 8 lbs

### Common Uses:

- Septic Vent Pipe up to 18" Tall
- Water Well Casing up 18" Tall
- Small Pump, Compressor, Blower or Backflow
- Flat Face for Address Plaque



## MODEL 116

Dimensions: 48"L x 20"W x 30"H  
Weight: 21 lbs

### Common Uses:

- Backflow Assemblies up to 2" in Diameter, 36" Long and up to 30" High
- External Water Pumps

dekorraproducts.com  
888-635-8585



DP-BRO-2019



### MODEL 117

Dimensions: 42"L x 24"W x 21"H  
Weight: 14 lbs

#### Common Uses:

- Horizontal Cable Boxes
- Wider Backflow Assemblies
- External Water Pumps



### MODEL 121

Dimensions: 42"L x 28"W x 17"H  
Weight: 18 lbs

#### Common Uses:

- 26" Septic Lids at Grade Level
- Irrigation Valve Boxes and Lids
- Ramp Design for Display with Built in Stone Ledge



### ROCK PLANTERS

#### MODEL 130

Dimensions: 16"L x 12"W x 5"H  
Weight: 2 lbs

- Small Planter—interior bowl measures 6" wide x 4" deep

#### MODEL 132

Dimensions: 35"L x 25"W x 12"H  
Weight: 9 lbs

- Large Planter accepts up to 3 gallon potted plants

### BACKFLOW ENCLOSURES

Our Backflow Enclosures are designed to cover backflow assemblies and sprinkler system components.

- Two piece design; includes cover and base
- Lockable and tamper resistant design
- Includes mounting hardware and metal vents
- Impact and weather resistant protection
- Heavy-duty polyethylene construction
- Available in Brown Granite (BG) and Green Turf (GT) Granite



301

302

### MODEL 301

Dimensions: 34½"L x 16½"W x 26½"H  
Weight: 15 lbs



Hasp closure for lock or zip tie.

### MODEL 302

Dimensions: 48"L x 17"W x 27½"H  
Weight: 25 lbs



Includes stakes, anchors and metal vents.

#### ASSE Standard 1060 Certified Options

- C3 - No freeze protection: non-insulated
- C2 - Freeze retardant: with insulation
- C1 - Freeze protection: With insulation and heat cable



### INSULATED POUCHES

Freeze protection for exposed plumbing.

- Commercial grade outdoor rated polyethylene construction
- R13 insulation factor
- 1 year warranty
- Securing grommets on most models
- Pair with a Dekorra Rock Enclosure for optimal performance and product longevity



HD reusable fastener included with every pouch.



GN - Green  
DT - Desert Tan

### AVAILABLE SIZES

- 602 - 24"L x 24"H - use with Rock Enclosures 101, 102 & 301
- 603 - 48"L x 24"H - use with Rock Enclosures 103, 117 & 302
- 604 - 60"L x 48"H - use with Rock Enclosures 104 & 123
- 605 - 16"L x 15"H - use with Rock Enclosures 107 & 109
- 606 - 24"L x 34"H - use with Rock Enclosures 113 & 116
- 607 - 16"L x 21"H - use with Rock Enclosures 107
- 609 - 24"L x 16"H - use with Rock Enclosures 109
- 610 - 34"L x 24"H - use with Rock Enclosures 110 & 117
- 614 - 60"L x 60"H - use with Rock Enclosures 114
- 616 - 48"L x 30"H - use with Rock Enclosures 116
- 617 - 30"L x 48"H - use with Rock Enclosures 104 & 123

### MODEL 400 MOCK ROCK® BLOCK EDGING

Dimensions: 10"L x 5"W x 4"H, Weight: 1 lb per block, 16 blocks per kit  
Creates 12 linear feet of edging or a 52" diameter ring.  
Includes ground stakes.

- Lightweight simulated stone blocks
- Easy to install
- Durable and impact resistant



RB - Riverbed



### MODEL 118

Dimensions: 32"L x 32"W x 11"H  
Weight: 9 lbs

#### Common Uses:

- Septic Risers and Manhole Lids up to 30" in Diameter
- Municipal Grinder Pump Access Ports and Manholes
- Commercial/Restaurant Grease Trap Access Lids

### MODEL 122

Dimensions: 19"L x 18"W x 13"H  
Weight: 3 lbs

#### Common Uses:

- Small Pumps
- Aeration Devices
- Sprinkler Valves
- Control Panels
- Well/Septic Pipes up to 11" Tall

### Mock Rock® artificial rocks are realistic, well-made, and available in 4 colors\*



AB - Autumn Bluff

FS - Fieldstone



RB - Riverbed

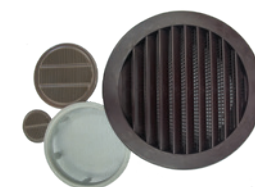
SS - Sandstone

\* Each rock is unique and colors will vary.

### ACCESSORIES

#### VENT LOUVERS

Add ventilation to rock enclosures. Specify color match.



- 710-CP: 1½" Diameter
- 711-CP: 3" Diameter
- 712-CP: 4" Diameter
- 713-CP: 6" Diameter

#### HEAT CABLE

Pre-assembled electric heating cable used for freeze protection of metal or plastic pipes.



- 751-HTP: 6' Cable
- 752-HTP: 12' Cable



### MODEL 119

Dimensions: 31"L x 28"W x 11"H  
Weight: 8 lbs

#### Common Uses:

- Septic Risers and Manhole Lids up to 26" in Diameter
- Municipal Grinder Pump Access Ports and Manholes
- Irrigation Valve Box Vault



### MODEL 123

Dimensions: 45"L x 36"W x 42"H  
Weight: 30 lbs

#### Common Uses:

- Pressure Tanks up to 30" in Tall
- Well Assemblies
- TV Satellite Dishes
- Pool Filters
- Utility Pedestals
- Flat Face for Address Plaque



### MODEL 120

Dimensions: 27"L x 25"W x 45"H  
Weight: 18 lbs

#### Common Uses:

- Telephone and Cable Pedestals up to 42" High
- Tall Residential Septic Vent
- Irrigation Controllers and Pedestals
- Flat Face for Address Plaque



### MODEL 124

Dimensions: 32"L x 27"W x 21"H  
Weight: 14 lbs

#### Common Uses:

- Buried Propane Tank Access Covers
- Sprinkler Manifolds
- Utility Boxes
- Pumps & Aerators



115 Rock with 653H-L-CB Address Plaque

### ADDRESS PLAQUES

Custom engraved, non-returnable.

- Three dimensional simulated metal
- No paint to fade or crack
- Stainless steel mounting hardware included
- 5 year warranty



Oval

650H-M 12"L x 6"H  
650H-L 16"L x 8"H



Rectangle

651H-M 12"L x 6"H  
651H-L 16"L x 8"H



Designer

652H-M 12"L x 6"H  
652H-L 16"L x 8"H

H after plaque number indicates Horizontal orientation. V indicated Vertical orientation. Medium horizontal plaques (H-M) fit 113 & 105 Rocks. Large horizontal plaques (H-L) fit 103, 110, 115 & 123 Rocks. Large vertical plaques fit 120 Rock.

#### AVAILABLE COLORS



CB - Copper



GB - Gold



NB - Nickel

Other wall mount designs available, visit [dekorraproducts.com](http://dekorraproducts.com)